

# Aprehend<sup>®</sup>

*Biological Bed Bug Control*

## Protect People & Property with Aprehend



Aprehend as a **Proactive**  
Bed Bug Treatment

In community and hospitality environments



## The Challenge

Bed bugs are a growing concern for property owners, public housing directors, and healthcare and hospitality professionals in all sectors. As opportunistic hitchhikers they are easily carried on bags and clothing. In fact, it's impossible for any facility that welcomes the general public to prevent the introduction of bed bugs. Their ability to hide in minute cracks and crevices make early detection extremely difficult even by the most meticulous housekeepers.

### ***Properties and community environments that will benefit from Aprehend Proactive Treatment:***

- Multi-unit housing
- Rental properties
- Hotels, vacation homes and rentals
- Doctor's offices and medical waiting rooms
- Long-term-care facilities
- Campgrounds
- Movie theatres
- Libraries
- Churches



## The Solution

**Enter Aprehend**, a natural fungal disease of insects that was developed specifically for the control and prevention of bed bugs. The long-lasting residual action of Aprehend remains active for up to 3 months and ensures that any bed bugs introduced will pick up the spores and die before establishing an infestation.

Proactive treatment with Aprehend® is applied only to the key areas where bed bugs are known to harbor when introduced into an environment.

The application of a quarterly pro-active treatment is far less costly and time consuming than treatment of active infestations once bed bugs have become firmly established in



“Aprehend has been the safest, most effective bed bug product Bug Bakers® has ever used. It is the only product we use in a home with children, an expectant mother, or pets, and the residual benefit gives homeowners the **peace of mind for 3 months.**”

—Greg Osborne, Bug Bakers® of Columbus



a property. Lost revenue, down-time and closures for treatment, and the negative publicity that result from infestations can be avoided.

Owners and managers of any private or public environment at risk of bed bug introduction and establishment can safeguard property and people from infestation.

Enjoy the peace of mind that only protection with Aprehend treatment provides.



“We have been using Aprehend in New York City multi-family housing with excellent results. The fact that it can be applied without the unit owner or tenant having to do an extensive preparation, being green and organic, plus a three-month residual makes it a winning solution.

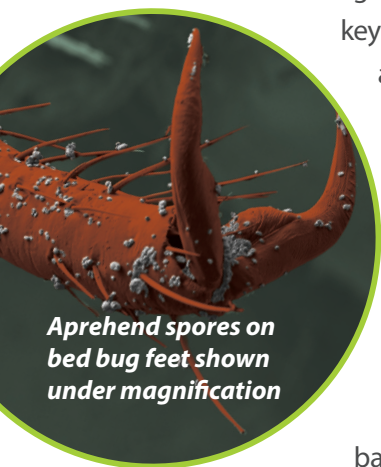
**Aprehend is a game changer.”**

—Jeff Klein, A3 Superior Pest Control

## How does Aprehend work?

Aprehend is a revolutionary fungal biopesticide for the elimination and prevention of bed bugs.

Strategic barriers are applied in key areas where bed bugs are known to harbor after introduction. When bugs cross the barrier, they pick up Aprehend spores and go on to die of the fungal disease in 3 - 7 days. This prevents the establishment of a bed bug infestation, and the barriers continue to provide protection for up to 3 months.



*Aprehend spores on bed bug feet shown under magnification*

## Are bed bugs found only in “dirty” places?

Public perception is that bed bugs are indicators of dirt or lack of hygiene, but bed bugs are just as happy to establish an infestation in a meticulously clean property as they are a dirty place. In fact, their only association is with people, as they feed exclusively on blood, and require the presence of a warm-blooded host to complete their life cycle. Bed bugs are opportunistic hitch-hikers and are easily carried in or on bags and clothing by people who live in infested properties. Bed bug introductions cannot be avoided, but infestations can. Don't let the risk of bed bug introductions tarnish your good reputation or affect your bottom line.

Visit [www.aprehend.com](http://www.aprehend.com)  
for more info and FAQs.







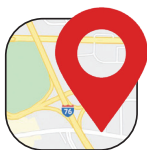
**Aprehend is ideal for proactive treatments:**

- Up to 3-month residual
- High effectiveness, proven in the field
- Requires minimal preparation
- EPA-registered, non-toxic mode of action
- No chemical resistance by bed bugs
- Fast application
- Available in all 50 states and Canada



**Aprehend**<sup>®</sup>  
*Biological Bed Bug Control*  
**PROFESSIONAL**

Find an Aprehend  
provider near you.



Search by zip code at  
[www.aprehend.com/availability](http://www.aprehend.com/availability)  
to find an Aprehend professional.



[www.aprehend.com](http://www.aprehend.com)

800-891-8610

rv. 7/2020

**ConidioTec**

*Natural Urban Pest Control*